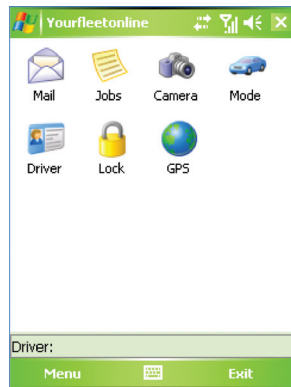


> Maptex Mobile Tracker

Features

Using software designed by Maptex, in conjunction with a GPS enabled GPRS mobile phone, allows full fleet and personnel tracking from one multi-functional device.



Vehicle tracking	✓
Portable tracking	✓
Messaging terminal	✓
Panic option	✓
Battery backup	✓
Turn by turn reporting	✓
Voice calling	✓
Driver Identification*	✓

The unit offers the following standard features on the Maptex service:

- > Journey start, stop and IO notifications over GPRS
- > SMS and Email notification of alarm conditions
- > Logging to memory when GPRS is offline
- > Internal Battery backup (phone battery) for operation when cradle power is not present.

The unit offers the following extended features on the Maptex service:

- > Adaptive logging based on distance and turns.
- > Parameters fully programmable over the air via GPRS / SMS.
- > Photo (using an appropriate phone) and signature capture.
- > Messaging interface:
 - Custom messaging interface
 - Canned" messages and free text, synchronised to Maptex host service.
- > Driver Identification interface:
 - Scrollable list of drivers
 - 4 digit Pin code
 - Synchronised to Maptex host service.
- > Panic button (using phone buttons).

The unit also has the following vehicle and user options:

- > Able to share GPS feed with satellite navigation software such as TomTom®.



> Maptex Mobile Tracker

Specification

Operating System:

- > Windows Mobile 5 or 6.
- > .NET 2.0 compact framework.

Phone Requirements:

- > Windows Mobile 5 or 6 (required)
- > GPRS capable (required)
- > GPS capable (required)
 - Internal GPS is preferable
 - External GPS is also possible
 - Either option must be configured to use WM5 GPS Intermediate driver
- > Photo facility (optional)
- > Vehicle cradle (optional)

Battery:

- > Battery life depends on a number of factors:
 - Phone use
 - Phone type
 - Phone configuration
 - Battery type
 - Screen backlight use
 - Software configuration
- > Typically, with several 5 ~ 10 minute calls, the tracker can run for 4~6 hours on battery power on a number of phones in constant tracking mode.

Note: Specifications may change without notice.

Message Storage:

- > Incoming message buffer will store up to 100 messages in the Phones' flash memory
- > Outgoing messages retained until despatched to host service

Hardware Compatibility:

- > Tested on the following types of devices:
 - XDA 2 + Bluetooth receiver
 - Mitac Mio A701
 - HTC P3300
 - IPAQ 6915

Satellite Navigation:

- > Tested in conjunction with TomTom® Navigator™ Version 6